



Building a Portfolio with Intention

Balance & The Big Questions



This work is licensed under a Creative Commons Attribution-NonCommercial-ShareAlike 4.0 International Public License

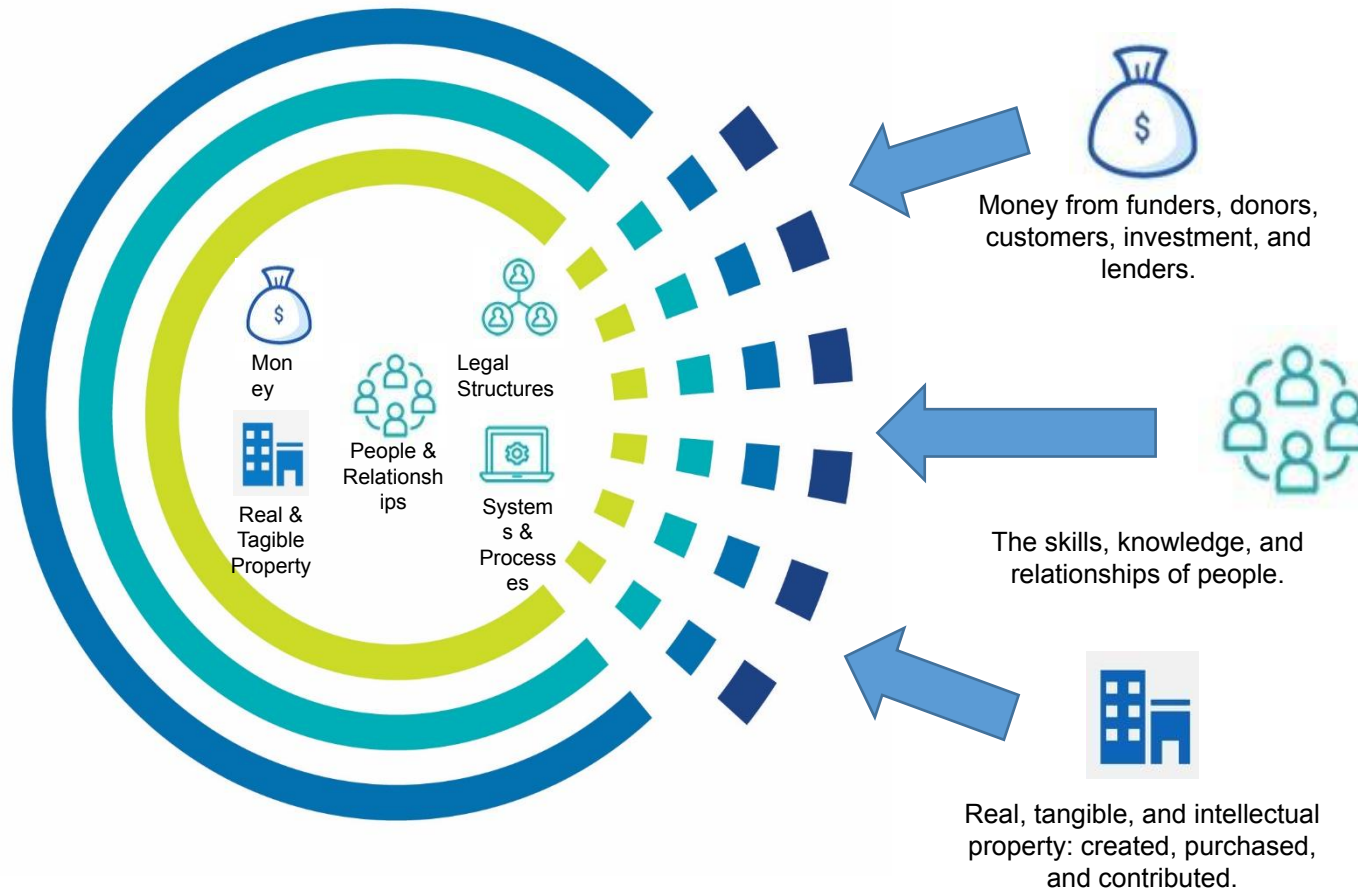
This means you can adapt this work and share its contents freely for non-commercial purposes, provided you credit Social Impact Commons.





Portfolio Review

Intentional Commons Management



How do we *manage* our existing commons resources and how we *build* new or more resources to serve this intentional community?

What do you know about your portfolio?

Overall Portfolio

- Total # of projects supported
- Total revenues under management
- Total expenses managed
- Total fees collected
- Total available cash
- Total change in net assets
- Average effective rate charged
- Changes across all these items over time (pre-COVID, post-COVID, change in services)



What do you know about this community?

Community

- # of community members by mission type
- # of community members by supports we provide
- # of community members by financial activity (revenues, expenses, fees contributed)
- # of community members by the type of efforts it requires to support
- Liquidity (Available Cash)
- LUNA (Available Net Assets)
- Portfolio breakdown by:
 - Mission focus,
 - Program areas,
 - Revenue and expense management approach

AND

- Changes across all these items over time (pre-COVID, post-COVID, change in services)



What do you know about your costs to deliver?

- ❖ Direct costs
- ❖ Allocable costs
- ❖ Indirect costs
- ❖ Capital/ Infrastructure costs
- ❖ Investment costs



Portfolio Informs: Shared Resources, Power and Community

SHARED RESOURCES

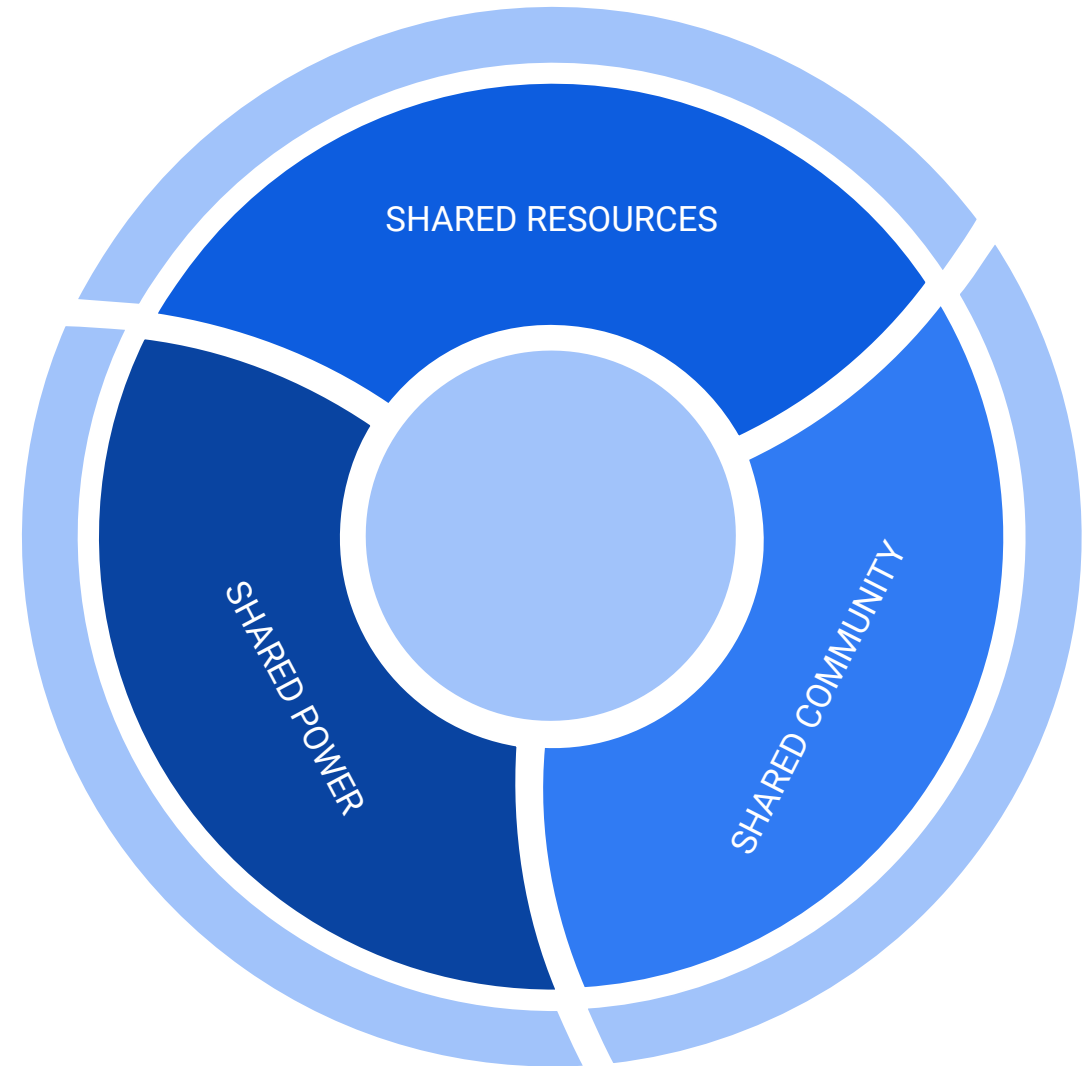
- Program
- People
- Finance
- Systems

SHARED POWER

- Governance
- Decision Making
- Transparency
- Trust

SHARED COMMUNITY

- Facilitated Learning
- Anti-Oppression
- Relationship Building
- Field Participation



Portfolio Analysis Can Inform

- ❖ Opportunities and risks of the current state
- ❖ Increases knowledge across the organization about who we serve and how
- ❖ Theory of Change/ Mission Drivers

AND

- ❖ Program Sustainability
- ❖ Program Strategy
- ❖ Services
- ❖ Structure (at all levels)
- ❖ Future scenario considerations
- ❖ Future Community
- ❖ Future Management



Preparing for Portfolio Analysis

- Assess current available data sources
- Assess current data quality (i.e. indirect costs)
- Assess commitment across the organization
- Create urgency / clarify your WHY
- Put a team and a plan together
- Keep the momentum
- Use the results to inform internal staff, external community, funders, strategic planning process, ongoing management and other strategic decisions





Asta Petkeviciute
Co-founder & Chief Financial Steward
asta@socialimpactcommons.org

Josh Sattely
Co-founder & Chief Legal Steward
josh@socialimpactcommons.org

Generous support for the development and work of Social Impact Commons has been provided thus far by:



Through the Fidelity Charitable Trustees' Initiative